

1. Uždaroji akcinė bendrovė „VILJANDI PREKYBA“ deklaruoja, kad pakuotė:

	<b>Lipnioji juosta pakavimui American®, Attack tape®</b> (grupė PP, kodas 5)
---	---

atitinka Lietuvos Respublikos pakuočių ir pakuočių atliekų tvarkymo įstatyme, Europos Parlamento ir Tarybos direktyvoje Nr. 94/62/EB (su ją keitusiomis direktyvomis Nr. 2004/12/EB ir 2013/2/ES) nurodytus reikalavimus ir, kaip nustatyta Lietuvos Respublikos standarte **LST EN 13427:2006** „Pakuotės. Pakuotėms ir pakuočių atliekoms skirtų Europos standartų taikymo reikalavimai“:

1.1. gaminant pakuotę paisoma mažiausio pakankamo pakuočių svorio ir tūrio, kaip nustatyta Lietuvos Respublikos standarte **LST EN 13428:2006** „Pakuotės. Specialieji sudėties ir gamybos reikalavimai. Prevencija mažinant žaliavų sąnaudas“;

1.2. sunkiųjų metalų (švinas, kadmis, gyvsidabris ir šešiavalentis chromas) bendra koncentracija pakuotėje neviršija 100 ppm pakuotės svorio, kaip nustatyta Lietuvos Respublikos standarto **LST 1655:2002** „Pakuotės. Pakuotės medžiagoje esančių keturių sunkiųjų metalų bei kitų pavojingų medžiagų ir jų išsiskyrimo į aplinką tikrinimo ir matavimo reikalavimai“ 1 dalyje;

1.3. cheminių medžiagų arba preparatų kiekis pakuotėje sumažintas iki mažiausio pakankamo kiekio, kaip nustatyta Lietuvos Respublikos standarto **LST CEN/TR 13695-2:2004** „Pakuotės. Pakuočių medžiagoje esančių keturių sunkiųjų metalų bei kitų pavojingų medžiagų ir jų išsiskyrimo į aplinką tikrinimo ir matavimo reikalavimai“ 2 dalyje;

1.4. įvertinta pakuotės pakartotinio naudojimo galimybė, kaip nustatyta Lietuvos Respublikos standarte **LST EN 13429:2007** „Pakuotės. Pakartotinis naudojimas“ ir atsižvelgta į privalomą pakuotės medžiagų tinkamumą perdirbti ar panaudoti bent vienu iš Lietuvos Respublikos standartuose minimų būdų:

Naudojimo būdas	Lietuvos Respublikos standartas	Yra galimybė naudoti šiuo būdu		Yra veikianti naudojimo sistema Lietuvoje	
		Taip	Ne	Taip	Ne
Pakartotinis naudojimas	LST EN 13429:2007		✓		✓
Medžiaginis grąžinamasis perdirbimas	LST EN 13430:2007		✓		✓
Panaudojimas energijos atgavimui	LST EN 13431:2007	✓		✓	
Organinis perdirbimas	LST EN 13432:2004		✓		✓

1.5. pakuotė yra paženklinta Pakuočių ir pakuočių atliekų tvarkymo taisyklėse nustatyta tvarka;

1.6. pakuotė skirta ne maisto produktams, taip pat tinkamai sufasuotiems, supakuotiems ir (ar) įtarintiems maisto produktams pakuoti (be tiesioginio sąlyčio su maistu).

2. Prie Pakuotės deklaracijos pridedami gamintojo pateikti dokumentai, pagrindžiantys pakuočių atitiktį 1.1–1.5 papunkčiuose nurodytiems reikalavimams.

Direktorius



Rolandas Kukcinavičius

## Test Report

No. CANEC1002480001

Date: 12 Jun 2010

Page 1 of 4

SHENZHEN FU FANG LONG PLASTIC PRODUCT LIMITED  
ZHUGUSHI VILLAGE,WULIAN, LONGGANG STREET, LONGGANG DISTRICT, SHENZHEN CITY  
CHINA

The following sample(s) was/were submitted and identified on behalf of the clients as :  
BOPP PACKING TAPE

SGS Job No. : 12562222 - GZ  
SGS Internal Reference No. : 2.1  
Date of Sample Received : 10 Jun 2010  
Testing Period : 10 Jun 2010 - 12 Jun 2010  
Test Requested : Selected test(s) as requested by client.  
Test Method : Please refer to next page(s).  
Test Results : Please refer to next page(s).  
Conclusion : Based on the performed tests on submitted sample(s), the results **comply with the RoHS Directive 2002/95/EC and its subsequent amendments.**

Signed for and on behalf of  
SGS-CSTC Ltd.



Lucy Wu  
Approved Signatory

This document is issued by the Company subject to its General Conditions of Service printed overleaf, available on request or accessible at [http://www.sgs.com/terms\\_and\\_conditions.htm](http://www.sgs.com/terms_and_conditions.htm) and for electronic format documents, subject to Terms and Conditions for Electronic Documents at [www.sgs.com/terms\\_e-document.htm](http://www.sgs.com/terms_e-document.htm). Attention is drawn to the limitations of liability, jurisdiction and arbitration issues defined therein. Any holder of this document is advised that information contained herein reflects the Company's findings, at the time of its issuance, and is subject to the limitations of Client's instructions, if any. The Company's sole responsibility is to its Client and this document does not constitute part of a transaction for determining all the rights and obligations under the transaction documents. This document cannot be reproduced except in full, without prior written approval of the Company. Any unauthorized alteration, forgery or falsification of the content or appearance of this document is unlawful and offenders may be prosecuted to the fullest extent of the law. Please refer to the status of results shown in this test report refer only to the sample(s) tested.



SGS  
INTEGRATING TECHNICAL SERVICES  
CORPORATION, CHINA  
Complete Technical Service

Guangdong Road, Shenzhen Futian District, Science & Technology Development District, Guangzhou, China 510663 | (86-20) 82156555 | (86-20) 82075113 | [www.cn.sgs.com](http://www.cn.sgs.com)  
中国·广州·经济技术开发区科学城科珠路198号 邮编: 510663 | (86-20) 82156555 | (86-20) 82075113 | [sgs.china@sgs.com](mailto:sgs.china@sgs.com)

Member of the SGS Group (SGS SA)

## Test Report

No. CANEC1002480001

Date: 12 Jun 2010

Page 2 of 4

### Test Results:

ID for specimen 1 : CAN10-024800.001  
 Description for specimen 1 : Transparent adhesive tape

### RoHS Directive 2002/95/EC

Test Item(s)	Unit	Test Method (Reference)	Result	MDL	Limit
Cadmium (Cd)	mg/kg	IEC 62321:2008, ICP-OES	N.D.	2	100
Lead (Pb)	mg/kg	IEC 62321:2008, ICP-OES	N.D.	2	1000
Mercury (Hg)	mg/kg	IEC 62321:2008, ICP-OES	N.D.	2	1000
Hexavalent Chromium (CrVI) by alkaline extraction	mg/kg	IEC 62321:2008, UV-Vis	N.D.	2	1000
Sum of PBBs	mg/kg	-	N.D.	-	1000
Monobromobiphenyl	mg/kg	IEC 62321:2008, GC-MS	N.D.	5	
Dibromobiphenyl	mg/kg	IEC 62321:2008, GC-MS	N.D.	5	
Tribromobiphenyl	mg/kg	IEC 62321:2008, GC-MS	N.D.	5	
Tetrabromobiphenyl	mg/kg	IEC 62321:2008, GC-MS	N.D.	5	
Pentabromobiphenyl	mg/kg	IEC 62321:2008, GC-MS	N.D.	5	
Hexabromobiphenyl	mg/kg	IEC 62321:2008, GC-MS	N.D.	5	
Heptabromobiphenyl	mg/kg	IEC 62321:2008, GC-MS	N.D.	5	
Octabromobiphenyl	mg/kg	IEC 62321:2008, GC-MS	N.D.	5	
Nonabromobiphenyl	mg/kg	IEC 62321:2008, GC-MS	N.D.	5	
Decabromobiphenyl	mg/kg	IEC 62321:2008, GC-MS	N.D.	5	
Sum of PBDEs	mg/kg	-	N.D.	-	1000
Monobromodiphenyl ether	mg/kg	IEC 62321:2008, GC-MS	N.D.	5	
Dibromodiphenyl ether	mg/kg	IEC 62321:2008, GC-MS	N.D.	5	
Tribromodiphenyl ether	mg/kg	IEC 62321:2008, GC-MS	N.D.	5	
Tetrabromodiphenyl ether	mg/kg	IEC 62321:2008, GC-MS	N.D.	5	
Pentabromodiphenyl ether	mg/kg	IEC 62321:2008, GC-MS	N.D.	5	
Hexabromodiphenyl ether	mg/kg	IEC 62321:2008, GC-MS	N.D.	5	
Heptabromodiphenyl ether	mg/kg	IEC 62321:2008, GC-MS	N.D.	5	
Octabromodiphenyl ether	mg/kg	IEC 62321:2008, GC-MS	N.D.	5	
Nonabromodiphenyl ether	mg/kg	IEC 62321:2008, GC-MS	N.D.	5	
Decabromodiphenyl ether	mg/kg	IEC 62321:2008, GC-MS	N.D.	5	

### Note:

1. mg/kg = ppm
2. N.D. = Not Detected (< MDL)
3. MDL = Method Detection Limit
4. "-" = Not regulated

This document is issued by the Company subject to its General Conditions of Service printed overleaf, available on request or accessible at [http://www.sgs.com/terms\\_and\\_conditions](http://www.sgs.com/terms_and_conditions).  
 For and for electronic format documents, subject to Terms and Conditions for Electronic Documents at [www.sgs.com/terms\\_e-document.htm](http://www.sgs.com/terms_e-document.htm). Attention is drawn to the limitations of  
 liability, jurisdiction and jurisdiction issues defined therein. Any holder of this document is advised that information contained herein reflects the Company's findings at the time of  
 the test and is not intended to be used in any way without the limits of Client's instructions, if any. The Company's sole responsibility is to its Client and this document does not constitute part of a transaction  
 or any other agreement. Any unauthorized alteration, forgery or falsification of the content or appearance of this document is unlawful and offenders may be prosecuted to the fullest extent of the law.  
 (Please check the status of results shown in this test report refer only to the sample(s) tested.)



SGS (Shanghai) Inspection & Testing Co., Ltd.  
 中国·广州·经济技术开发区科学城科珠路188号

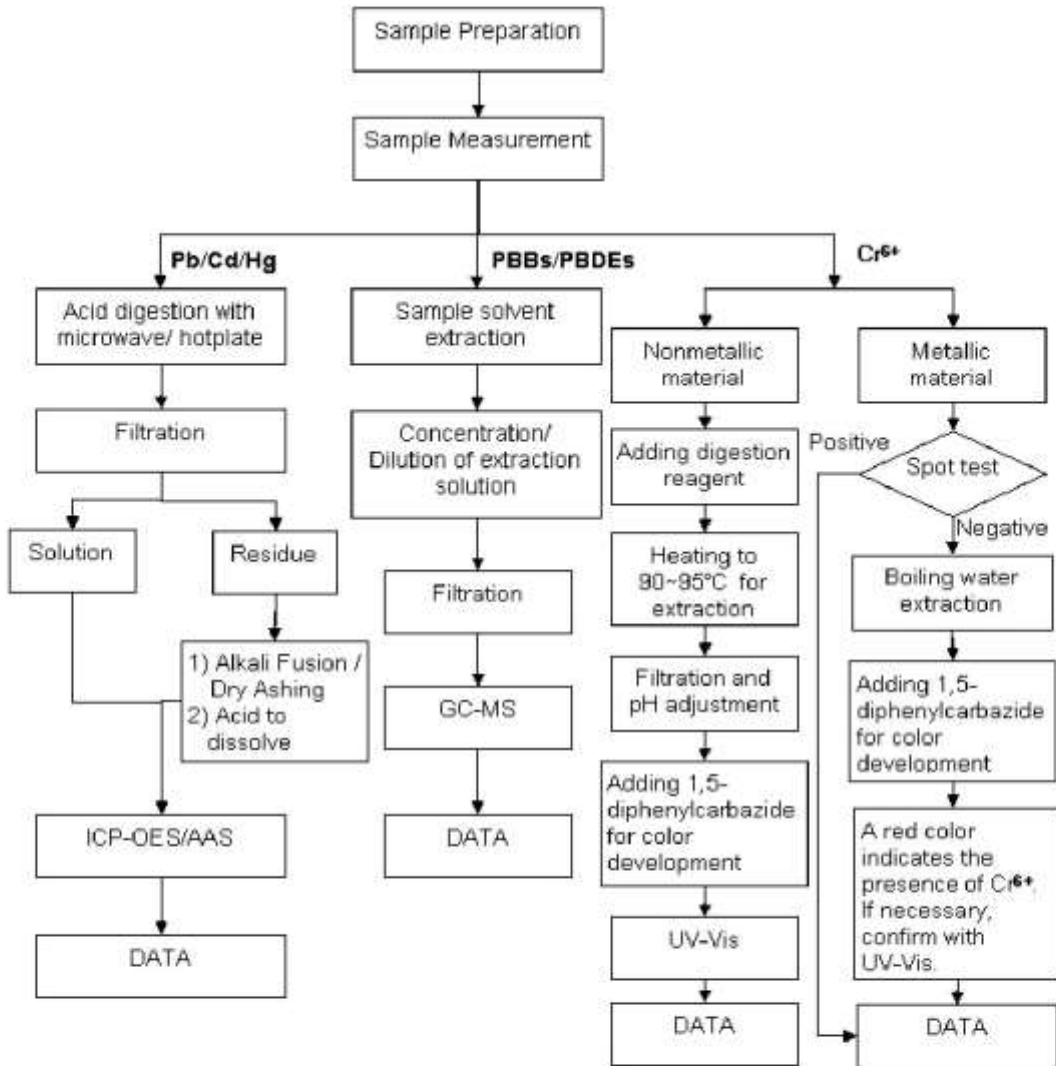
Shanghai Test Center, Guangzhou, Economic & Technology Development Zone, Guangzhou, China 510663 | (86-20) 82152655 | (86-20) 82075113 | [www.cn.sgs.com](http://www.cn.sgs.com)  
 中国·广州·经济技术开发区科学城科珠路188号 邮编: 510663 | (86-20) 82152655 | (86-20) 82075113 | [sgs.china@sgs.com](mailto:sgs.china@sgs.com)

Member of the SGS Group (SGS SA)

ATTACHMENTS

**RoHS Testing Flow Chart**

- 1) Name of the person who made testing: Bella Wang / Cutey Yu / Ross Zhan
- 2) Name of the person in charge of testing: Adams Yu / Ryan Yang
- 3) These samples were dissolved totally by pre-conditioning method according to below flow chart (Cr6+ and PBBs/PBDEs test method excluded).



This document is issued by the Company subject to its General Conditions of Service printed overleaf, available on request or accessible at [http://www.sgs.com/terms\\_and\\_conditions.htm](http://www.sgs.com/terms_and_conditions.htm) and for electronic format documents, subject to Terms and Conditions for Electronic Documents at [www.sgs.com/terms\\_e-document.htm](http://www.sgs.com/terms_e-document.htm). Attention is drawn to the limitation of liability, jurisdiction and jurisdiction issues defined therein. Any holder of this document is advised that information contained herein reflects the Company's findings at the time of testing and is not intended to be used for any other purpose without the limits of Client's instructions, if any. The Company's sole responsibility is to its Client and this document does not constitute part of a transaction or any other agreement. Any unauthorized alteration, forgery or falsification of the content or appearance of this document is unlawful and offenders may be prosecuted to the fullest extent of the law. Results shown in this test report refer only to the sample(s) tested.



SGS (Shanghai) Technical Services Co., Ltd. 中国·广州·经济技术开发区科学城科珠路188号 邮编: 510663 | (86-20) 82158555 | (86-20) 82075113 | [www.cn.sgs.com](http://www.cn.sgs.com)  
 SGS (Shanghai) Technical Services Co., Ltd. 中国·广州·经济技术开发区科学城科珠路188号 邮编: 510663 | (86-20) 82158555 | (86-20) 82075113 | [sgs.china@sgs.com](mailto:sgs.china@sgs.com)

Member of the SGS Group (SGS SA)

Sample photo:



SGS authenticate the photo on original report only

\*\*\* End of Report \*\*\*

This document is issued by the Company subject to its General Conditions of Service printed overleaf, available on request or accessible at [http://www.sgs.com/terms\\_and\\_conditions](http://www.sgs.com/terms_and_conditions), for and for electronic format documents, subject to Terms and Conditions for Electronic Documents at [www.sgs.com/terms\\_e-document.htm](http://www.sgs.com/terms_e-document.htm). Attention is drawn to the limitation of liability, jurisdiction and arbitration and jurisdiction issues defined therein. Any holder of this document is advised that information contained herein reflects the Company's findings at the time of testing and is not intended to constitute an offer of insurance or any other financial product. The Company's sole responsibility is to its Client and this document does not constitute part of a transaction or any other financial product. Any unauthorized alteration, forgery or falsification of the content or appearance of this document is unlawful and offenders may be prosecuted to the fullest extent of the law. Please refer to the attached results shown in this test report refer only to the sample(s) tested.



SGS (China) Technical Services Co., Ltd.  
Company Name in Chinese Language

Guangzhou Test Center, P.O. Box 100, Guangzhou Economic & Technology Development Zone, Guangzhou, China 510663 | (86-20) 82152655 | (86-20) 82075113 | [www.cn.sgs.com](http://www.cn.sgs.com)  
中国·广州·经济技术开发区科学城科珠路100号 邮编: 510663 | (86-20) 82152655 | (86-20) 82075113 | [sgs.china@sgs.com](mailto:sgs.china@sgs.com)

Member of the SGS Group (SGS SA)